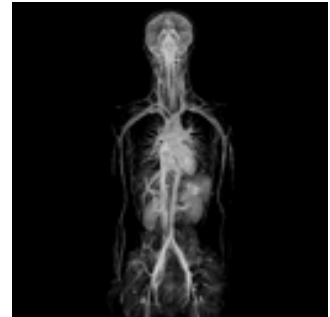


For Immediate Release

Contacts: Leni Kirkman, Julie Wiley
(210) 358-2335 - Pager: 756-1200

A picture worth a thousand words – in just 10 seconds *World's most advanced diagnostic imaging equipment now available locally*



(SAN ANTONIO – April 10, 2008)

Sharper, more accurate images, means faster, more accurate diagnosis. Better diagnosis, can lead to better outcomes for patients. That's why University Health System has invested in the very latest computed tomography (CT or Cat scan) and magnetic resonance imaging (MRI) systems at its new Downtown Imaging Center, which officially opened today.

In addition to providing superior image quality, the goal of the new imaging center is to offer these services in a convenient location, *outside* University Hospital. “Up until now, all radiology imaging for University Health System patients was done at University Hospital, so it is hoped the additional location will reduce wait times for hospitalized patients in need of radiology services and parking congestion at the hospital,” said George B. Hernández, Jr., president/CEO of University Health System. Providing these services outside the hospital may also help reduce emergency room overcrowding, as patients seen in University Health System clinic locations are often sent to the ER for immediate MRI or CT services. “Now, these patients can often get same day appointments at the new Downtown Imaging Center,” added Yolanda Cantu, administrative director of Radiology for University Health System.

Featuring the most sophisticated multi-slice CT technologies available, the Toshiba™ Aquilion 64 can capture precise images of any area of the body in as little as ten seconds. Chest exams – which take 20-30 minutes with a standard CT scanner – can now take as little as 19 Seconds, and provide images that allow physicians to see greater detail than ever before. “With the Aquilion 64, our physicians will be able to see more anatomical information than previously thought possible, which means we can diagnose problems like blood clots, infections and cancer in greater detail and with more clarity,” said Kevin Hart, assistant administrative director of Radiology.

Another benefit of the Aquilion 64 design is that its detector features a highly efficient ceramic material that is able to reduce the overall radiation exposure to patients, as well as staff. The system’s dose control features provide up to a 40 percent total dose reduction for the patient.

While CT uses X-ray technology, it is different from other imaging tools like X-ray and MRI by its ability to display a combination of soft tissues (like muscles, organs and fat), bones and blood vessels all in a single image. Doctors perform CT scans to diagnose kidney, lung, liver, spine, blood diseases, cancer, tumors and cysts, as well as blood clots, hemorrhages and infections.

The Aquilion system delivers unmatched multi-slice clinical images that capture up to 64 simultaneous anatomical slices in a single rotation. As a result, it can produce precise images of the body’s rapidly moving organs like the heart and lungs, which appear blurry when scanned by traditional CT.

The new University Health System Downtown Imaging Center also features the Toshiba Vantage™ MRI system. With its state-of-the-art scanning capabilities, the system offers faster exam times and higher quality results.

Historically, MRI exams have been among the most difficult experiences for patients – causing serious anxiety and claustrophobia for many. This is due to the noisy, tunnel-like systems and long exam times.

“We are thrilled with this machine because its design makes it feel more open, and the quietness during scanning is more calming for the patient,” explained Hart. Instead of a loud grinding noise, patients hear more like a gentle tapping. “When the patient is more at ease, we have greater success with the scan and capture better images to make a confident diagnosis,” added Cantu.

The Vantage also includes the world’s shortest magnet and an ultra-short bore platform. This means the feeling of being inserted into a tube-like machine is significantly reduced.

University Health System Downtown Imaging
Page 2

Patient comfort aside, the Vantage is a high-field MRI system that performs a wide variety of MRI exams including the latest state-of-the-art imaging techniques such as brain and cardiac imaging, advanced chest and abdominal exams, high-resolution imaging, and off-center field-of-view imaging.

The new University Health System Downtown Imaging Center is open Monday – Friday from 8 a.m. – 4 p.m. for CT scans, with extended hours until 8 p.m. for MRI exams. For information or appointments, please call 210-358-2725.

###

Aquilion™ and Vantage™ are trademarks of Toshiba Medical Systems Corporation.