

Target 2012



University Health System

Bexar County Hospital District

An update on the construction projects at University Hospital and University Health Center - Downtown

Conceptual design approved for University Hospital project

At its final meeting for 2009, the University Health System Board of Managers approved the conceptual design scheme for University Hospital as part of a larger Project Definition report. "The architect's conceptual design accomplishes substantially all of the objectives of the University Health System Master Facility Plan," explained Mark Webb, University Health System vice president for Facilities Development

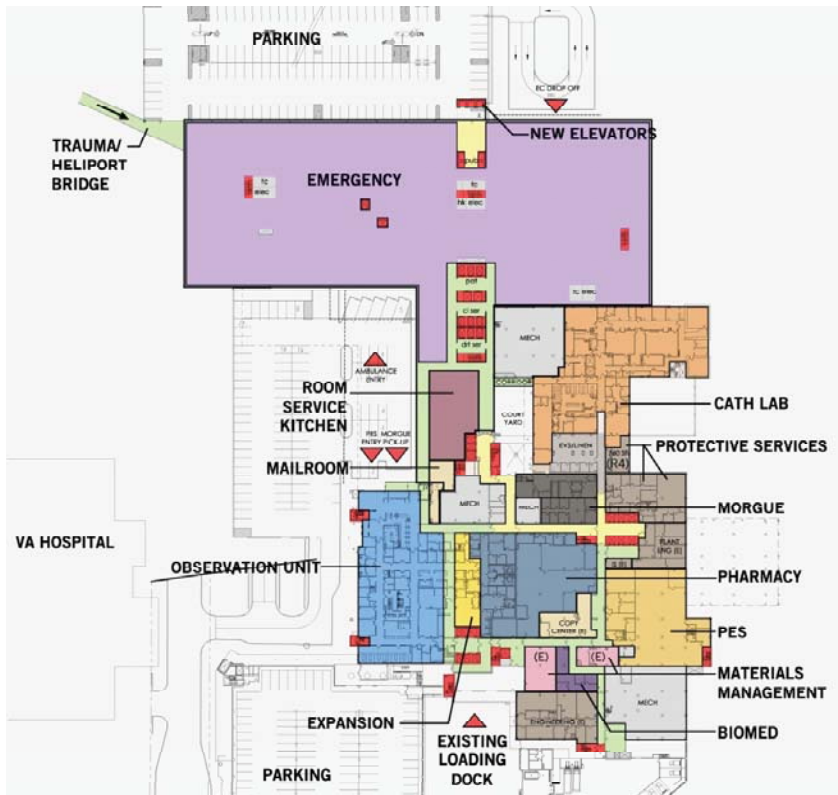
and Project Management. He also reported construction estimates to be under the \$778,486,278 capital budget approved by the Board.

The conceptual design process included input and involvement from nurses, physicians and other key user groups. Key Master Facility Plan goals achieved include:

- Expand the Emergency Center
- Replace most beds in the 1968 tower

Cont'd on page 2

Conceptual Design of new sub-level at University Hospital.



CLICK HERE for more visuals on the conceptual design plan for University Hospital.

Informational meetings planned for University Hospital temporary parking lot

Weather permitting, the temporary parking lot on Wurzbach, next to Walgreen's will open in late February and plans are underway to provide in-person information sessions for those hospital employees who will be relocating from the C lot until the new permanent garage opens in late 2010.

These meetings will include information on security and shuttle service. Each "remote parker" attending will also receive a token of appreciation for their cooperation during the construction. In the next few weeks, day shift hospital workers who park in the C lot will receive an email with meeting details.

Patients and visitors, as well as hospital employees who pay for parking, will continue to park on the hospital campus. Work to demolish a portion of the current employee/visitor garage will NOT begin until a large section of the new garage opens.

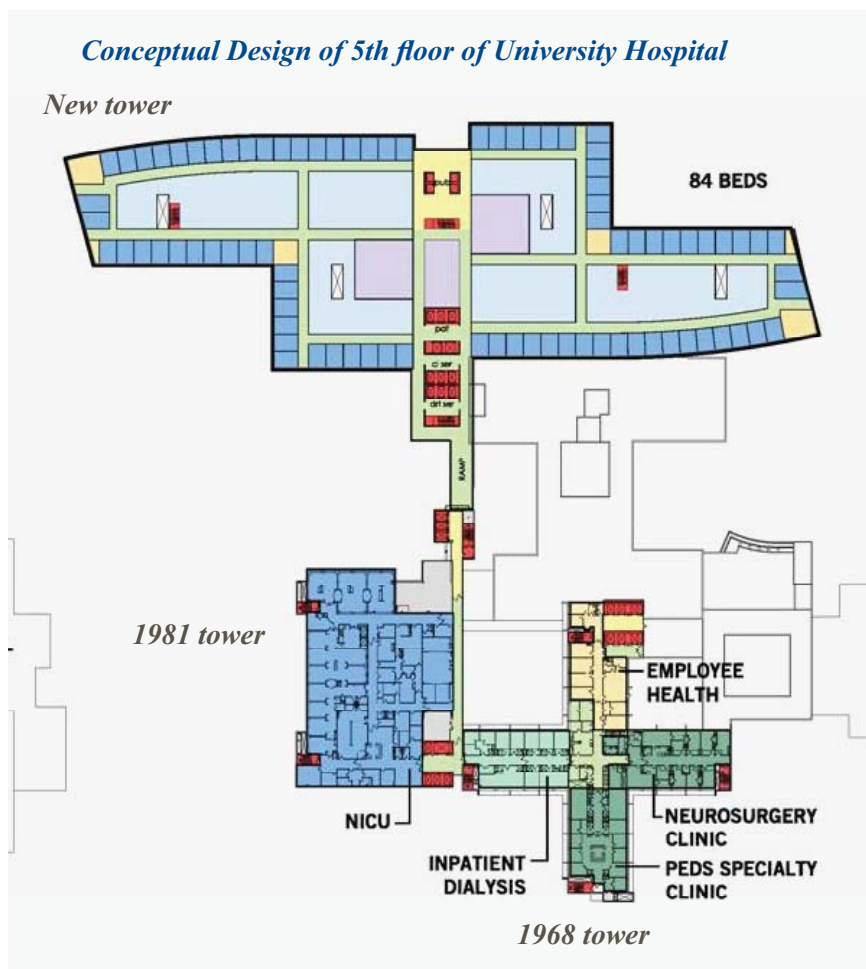


Cont'd from page 1

- Retain most beds in the 1981 tower
- Right-size diagnostic and treatment areas
- Provide adequate on-site parking
- Separate public and service circulation patterns
- Separate emergent from non-emergent functions
- Enable future growth
- Create a "campus feel" with green spaces
- Accommodate significant elevation changes on property

When the project is complete, University Hospital will have 716 total beds. The next step is the development of schematic designs and equipment planning strategies. This process will ultimately define how the interior and exterior of the new tower will look in terms of design features, landscaping and building materials.

The conceptual design for University Health Center - Downtown will be presented to the Board of Managers later this month.



This is an example of one of the inpatient unit floors in the new tower. The conceptual design phase determines the size and locations of departments, and the overall scale of the project. The process now moves forward to develop more specific designs related to how the building will ultimately look, inside and out.

Have a question?

What will happen with the helipad on the garage?

In May of this year, construction of a new helipad on top of the physicians' garage behind University Hospital will begin. The existing helipad will be demolished in early 2011 to make way for the new hospital tower. A second heliport will be constructed on top of the new 3,300+ space garage. Once construction on the new tower is completed, the second heliport will connect to the new Emergency Center with a covered breezeway. The helipad behind the hospital is expected to remain open for those helicopters carrying NICU or obstetrics patients, to save transport time, since those units will not be moving to the new tower.

Where will patients and staff park during the construction at University Health Center-Downtown?

Parking plans are currently being finalized for the downtown project. By June 2010, work will begin on the site of the West Annex, across Frio Street, to create a large parking lot on that property. At this point, the decision has not been made with regard to whether that will be a visitor or staff lot. Either way, additional parking will be in place prior to the closing of the current visitor lot, which will be the site of the new clinical services building.

[Click here](#) to submit a question on the Target 2012 Program.